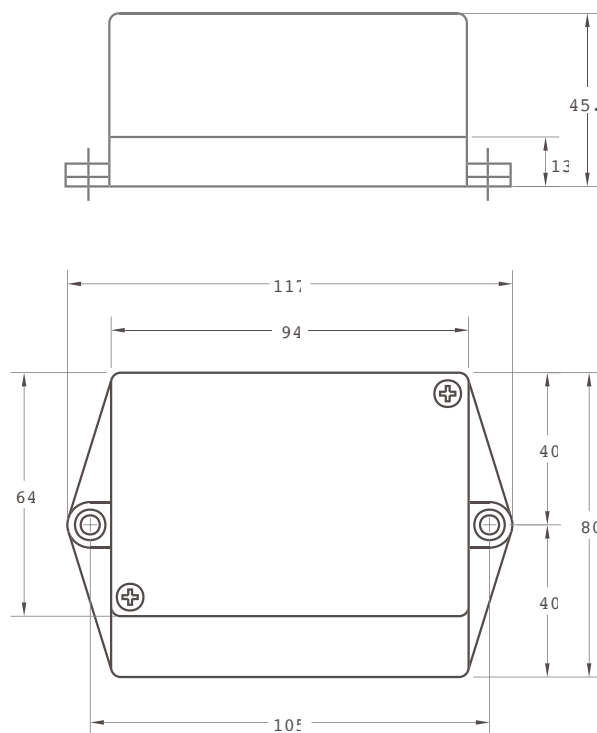
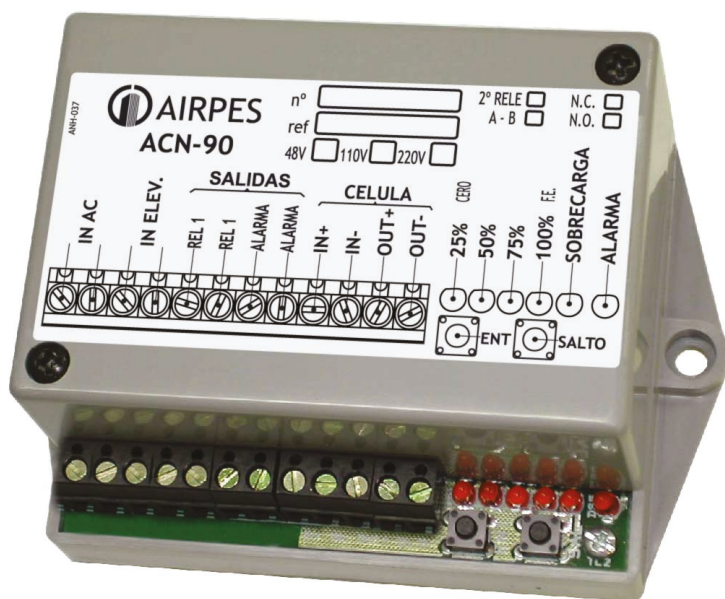


Economic Black Box ACN-90



Revisión 01 | Reviewed by JN

airpes®



General information

The ACN-90 model of economic black box has been designed to register the spectrum of loads of elevating devices (hoist), according to the UNE 58 919 normative. Apart from the control over the safe working period (SWP) established by the norm, they have several registers for the control of the:

- number of lifting manoeuvres
- number of impulse lifting manoeuvres
- time of manoeuvring of a lifting
- number of surcharges
- number of passed over surcharges
- activation of revision per number of hours or date.

All the data will be visualized in the AMM-40 terminal of configuration (see catalogue) protected through a security key. It includes a restrictor for control of surcharges. Can be connected on whichever weight sensor sited in: fixed branch line, return tackle block, cart, cable, etc.

Prepared for systems that do not incorporate load cell.

Characteristics

- Weight entry
- Lifting entry
- Surcharge exit, selective commuted contact (N.O. or N.C.) (6A 250V).
- Alarm exit, selective commuted contact (N.O. or N.C.) (6A 250V).
- Operative hysteresis in surcharge limit
- 2 keys for calibration of the system with nominal charge
- Through the AMM-40 portable terminal loads can be calibrated different from the nominal ones, and different configurations of the black box are possible.
- Alimentation 48V or 110V-220V AC (low demand)
- Temperature -10° -50°C; Humidity 15% - 85%